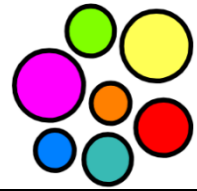







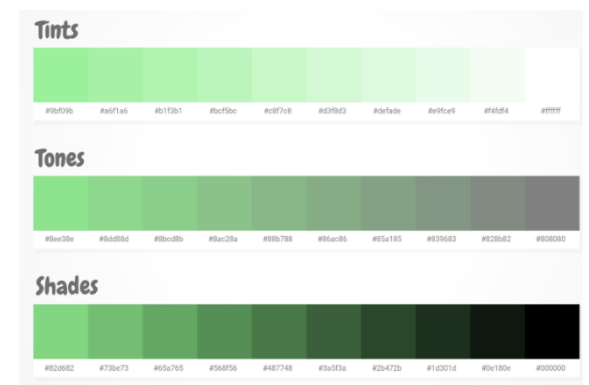
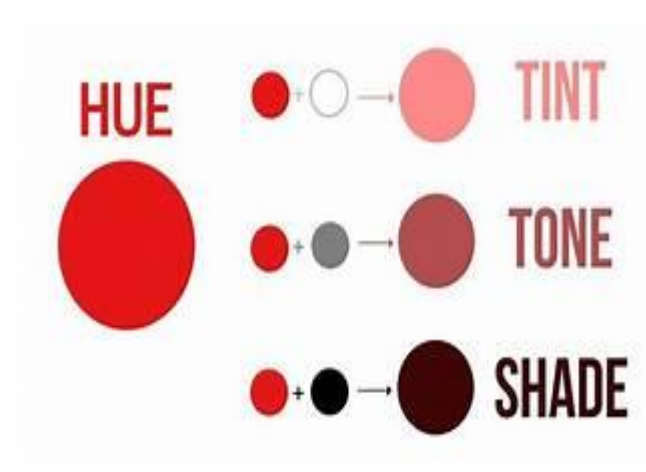
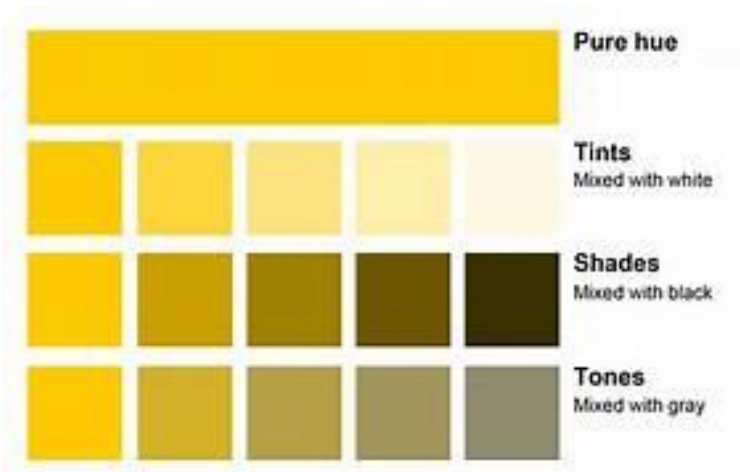


Year 5: Art: Painting and Colour

Vocabulary

hue	A colour	
tint	Adding white to a hue	
shade	Adding black to a hue	
tone	Adding grey to a hue	
blending	Mixing or combining things together	
Dry-brush	Dry brushing is the application of a minimal amount of paint to a surface with an almost dry brush	

elements	What makes up a piece of artwork, this will include: line, shape, texture, form, space and colour	
Oil paints	A thick paint made with pigment and a drying oil such as linseed oil, used chiefly by artists	
medium	The material used by an artist to create their work	

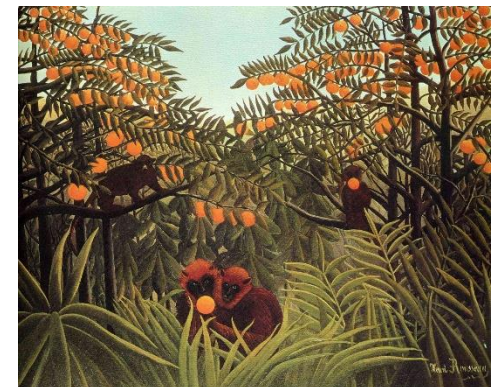
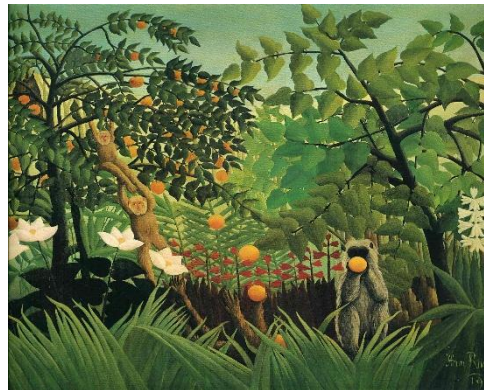


Year 5: Painting and Colour

Knowledge

- To know that Henry Rousseau is a modern artist who uses paint to create artwork depicting tropical **landscapes**.
- To know that Henry Rousseau used **oil paints** to create many of his artworks
- Know that **Hue** means colour.
- Know that **tone** refers to adding grey to a hue
- Know **Shade** refers to adding black to a hue
- Know that **tint** refers to adding white to a hue
- To know that Henri Rousseau often had a sky in the background
- To know that when creating sky, it is important to think about where the light source is
- To know that the **hue** of the sky should be darker the further away it is from the light source, both horizontally and vertically.
- Know that Henri Rousseau when creating his colour in his jungle leaves, would often have different **tones, shades** and **tints** of greens in the same leaf
- Know that the lighter area of green will reflect the direction which the light is coming from

- Know that **blending** involves joining to different tints, tones or shades together.
- Know that when **blending oil paints**, you paint each areas of colour first.
- Know that you can then take a **dry-clean brush** and carefully **blend** the colours into each other
- Know that Henri Rousseau contrasted the green colours with bright and vibrant colours of flowers and animals.



Quizzing		Quiz at home
Ask your partner the questions below. Can they find the correct answer on the right-hand side?		<p>Ask your adult to look at the KO.</p> <p>Quiz them using the vocabulary and knowledge section or the quiz questions.</p> <ul style="list-style-type: none">• Can they beat your score?• Can they score more than 5?• Compete with your adult in the elimination quiz. Take it in turn to ask each other questions. The first person to get a question wrong is out.
This means adding grey to a hue	animals and fruit	
This means adding black to a hue	Landscapes	
This means adding white to a hue	tint	
What type of artwork is Henri Rousseau famous for?	watercolours	
What type of medium did Henri Rousseau often use?	tone	
What type of images did Henri Rousseau often create in his artwork?	pencils	
What is used to thin the oil paints so that it is easier to blend?	Seascapes	
What did Henri Rousseau often contrast his green leaves with in his artwork?	hue	
	shade	
	oil paints	
	linseed oil	
Big Questions	Beat Your Adult	
<div>1. Why do you think that artists think carefully about the colours which they are to use?</div> <div>2. What do you think the effect of using different shades, tints and tones of the same hue colours has on the person looking at the artwork?</div> <div>3. What is the effect of using contrasting colours to the green in Henri Rousseau’s artwork?</div>	<div>• Using paints at home, create different tints, shades, and tones of the same hue of green to create another jungle scene. Ask another adult to judge which is better and stick it on the fridge!</div>	
Word scramble	Creative Task	

Unscramble the key vocabulary from this topic below. You can create your own at the bottom

note

eah

dalnspace

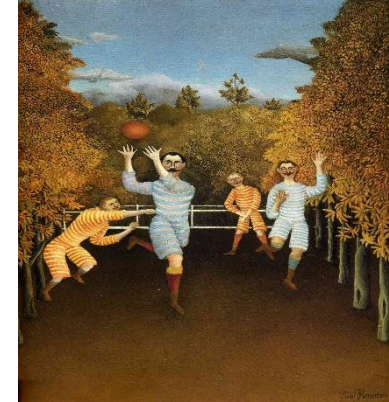
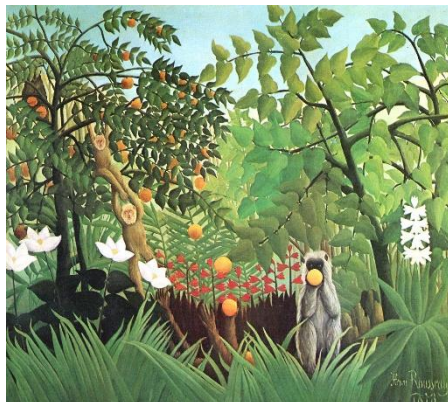
edhsa

dlbneig

Ydr uhbrs

ittn

1. Create a piece of landscape artwork using tints, tones and shades of the same hue. If you need to borrow some resources, just ask your teacher!
2. Investigate how much it would cost to buy a piece of artwork by Henri Rousseau. Where can you see original pieces of this artwork by these artists?
3. Try and recreate a piece of work by Henri Rousseau using pencil crayons – but not grey writing pencils!



Tell a partner / an adult the definition for the missing spaces below

Vocabulary

hue		
	Adding white to a hue	
	Adding black to a hue	
	Adding grey to a hue	
blending		
Dry-brush		
	What makes up a piece of artwork, this will include: line, shape, texture, form, space and colour	
Oil paints		
	The material used by an artist to create their work	

