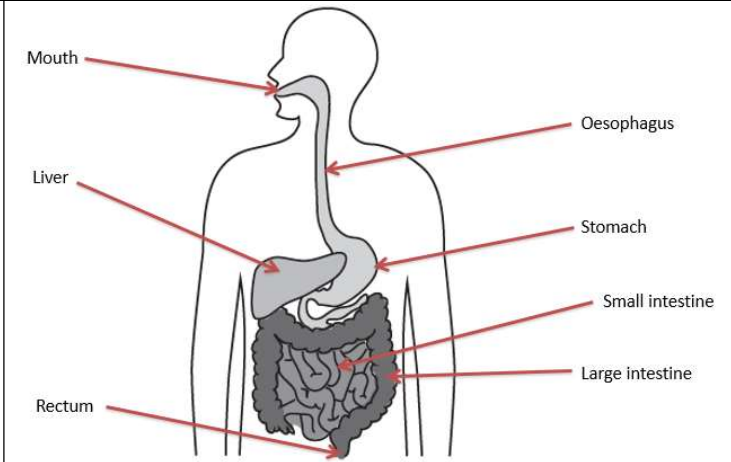


Year 4 Science - Animals, including humans

Key Vocabulary

Enamel	The hard covering for the tooth.
Decay	Rot or decompose through the action of bacteria and fungi. This is what happens to teeth when they are not cared for.
Incisors	Teeth used for biting and cutting
Canines	Teeth used for ripping and tearing
Molars	Teeth used for grinding
Vitamins	We need these for growth
Calcium	A vitamin we gain from dairy products
Oesophagus	A muscular tube lined with mucus which connects the throat to the stomach.
Digestion	The process of digesting food
Duodenum	The first part of the small intestine
Saliva	A watery fluid made in the mouth
Bile	A fluid released by the liver that helps with digestion
Primary consumer	The first animal in a food chain
Secondary consumer	The second animal in a food chain
Tertiary consumer	The third animal in a food chain

The digestive system



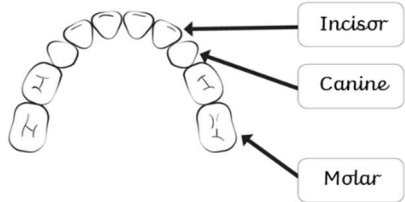
Stem sentences

"I predict that _____"

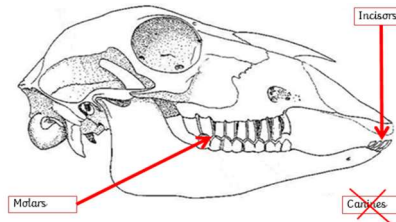
"The control in my investigation will be _____"

"I think these teeth belong to a herbivore/ carnivore/ omnivore because they have incisors/canines/molars"

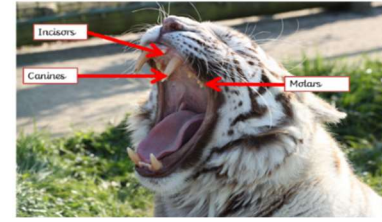
Types of teeth



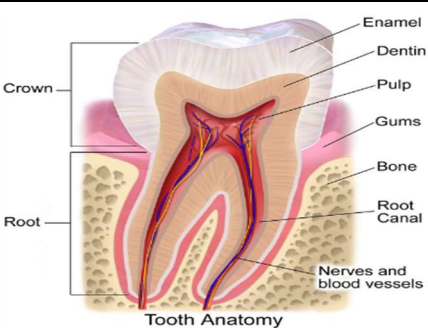
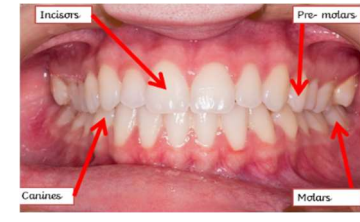
Sheep – herbivore



Tiger – Carnivore



Human – omnivore



As well as brushing our teeth, some people also use mouthwash and dental floss to keep their teeth healthy.

These help to remove any bits of food and bacteria from our teeth. Bacteria produce acid which can damage our teeth and cause decay.

Toothpaste also contains a chemical called fluoride that helps keep our teeth strong.

Food chains



- We show the transfer of energy from one organism to another by making a food chain.
- The arrow represents 'passes energy to'
- In this example we can say: The grass passes energy to the gazelle, the gazelle passes energy to the lion.